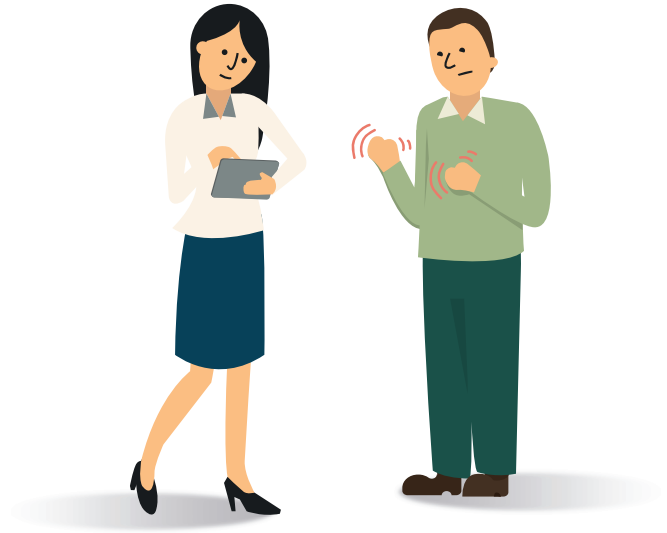


Peripheral attacks & me

Discussing peripheral attacks with your doctor or nurse

For many people who live with hereditary angioedema (HAE), peripheral attacks can be painful and disrupt everyday activities. By discussing with your doctor or nurse how peripheral attacks affect you it's possible to better manage the symptoms.

Please answer the following questions, thinking about your recent experience of peripheral attacks. When you next see your immunology doctor or nurse, please discuss your answers. You may wish to make some notes below to help with the conversation:



How many of your last 10 attacks affected hands, feet or other peripheral areas?

How many of these prevented you from completing everyday activities?

What sort of everyday activities were affected by a peripheral attack?

Did these attacks lead to other swellings?

Did you treat these attacks? If so, what treatment and dose did you use?
